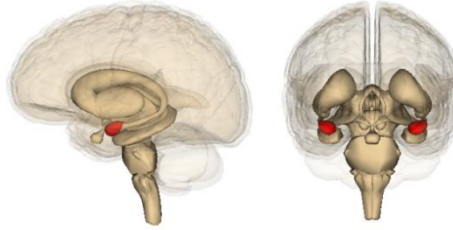


WHAT'S INSIDE YOUR BRAIN?

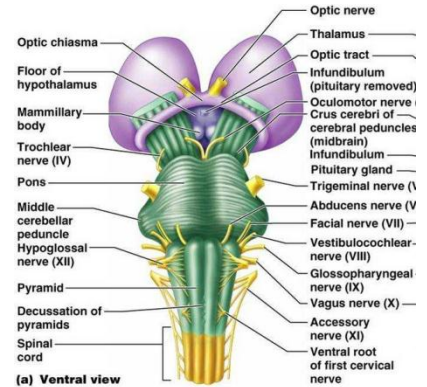
Amygdala

- Fear-processing
- Emotion processing
- Learning
- Fight or flight response
- Reward-processing



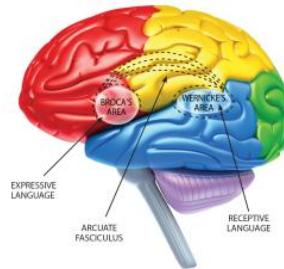
Brain Stem

- Maintains homeostasis by controlling autonomic functions
- Alertness & startle response
- Sleep
- Balance



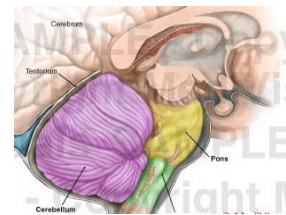
Broca's Area (left hemisphere only)

- Language production (speech and sign)
- Comprehension of complex syntax



Cerebellum

- Coordination of voluntary movement
- Motor-learning
- Balance
- Reflex memory
- Posture
- Timing
- Sequence learning



Corpus Callosum

- Connects the right and left hemispheres of the brain



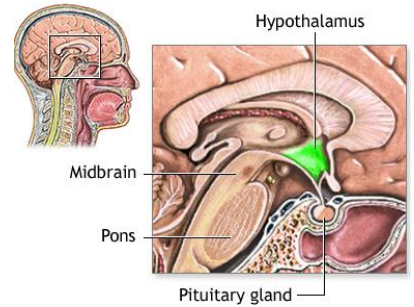
Hippocampus

- Early memory storage
- Formation of long-term memory
- Spatial navigation



Hypothalamus

- Hunger
- Thirst
- Body temperature
- Sexual activity
- Parenting
- Perspiration
- Blood pressure
- Heart rate
- Shivering
- Pupil dilation
- Circadian rhythms
- Sleep

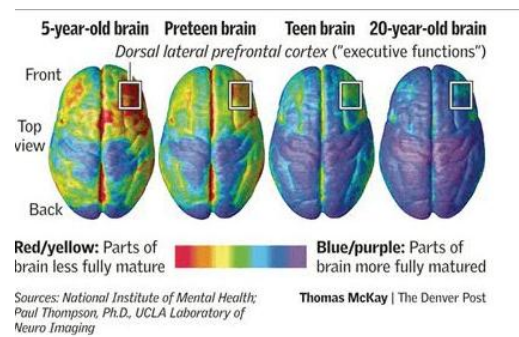


Pons

- Regulates breathing, taste, and autonomic functions

Prefrontal Cortex

- Executive processes
- Attention
- Inhibition
- Intelligence
- Social skills



Premotor Cortex

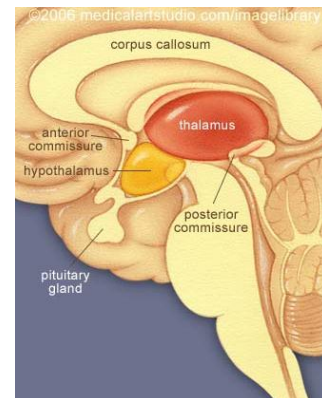
- Planning and executing motor movements
- Imitation
- Empathy

Primary Motor Cortex

- Speech impairments
- Motor-learning deficits

Thalamus

- Relays motor and sensory information
- Memory
- Alertness
- Consciousness
- Contributes to perception and cognition



Wernicke's Area

- Language comprehension

